

LOVE IS A RIVER

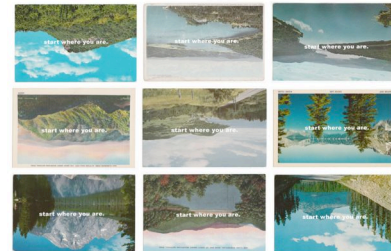
March 12, 2011 – May 1, 2011

Estuary Gallery
39 Front Street Loft 7
Beacon NY 12508

CHECKLIST *

Main Gallery
proceeding counter-clockwise from entrance

1. Audra Wolowiec
Start Where You Are, 2011
Edition 6 of 6
Silkscreen on grid of 6 found postcards
3.5 x 5.5 inches each



2. Michael Itkoff
Ice Crack, Lake Wallenpaupak, PA, 2009
Edition 3 of 7
Chromogenic print
20 x 24 inches



3. Sophie Barbasch
Edition of 10
Hiding, 2008
Chromogenic print
15 x 18 inches framed



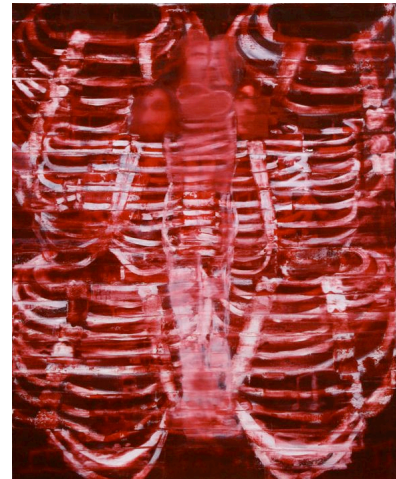
* Prices available upon request

LOVE IS A RIVER, Estuary Gallery (Main Gallery cont'd)

4. Sarah Palmer
Atlas of Human Anatomy, 2010
Edition of 5
Archival Pigment Print
20 x 24 inches framed



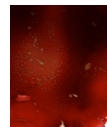
5. Leemour Pelli
Passio, 2009-10
Oil on canvas
60 x 48 inches



6. Ellie Irons
Watershed Topography (New York Harbor), 2009
3 unique drawings
Graphite and colored pencil on paper
20 x 16 inches each framed



7. Tara Cronin
T is For Transition, 2010
Artist proof
Archival pigment print mounted to wood
5 x 4 inches

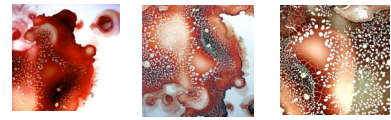


LOVE IS A RIVER, Estuary Gallery (Main Gallery cont'd)

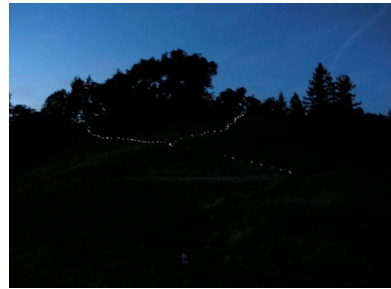
8. Marla Leigh Caplan
Black River, 2008
Edition of 10
Chromogenic print mounted to aluminum
12 x15 inches



9. Tara Cronin
T is For Transition, 2010
Artist proofs
3 archival pigment prints mounted to wood
5 x 5 inches each



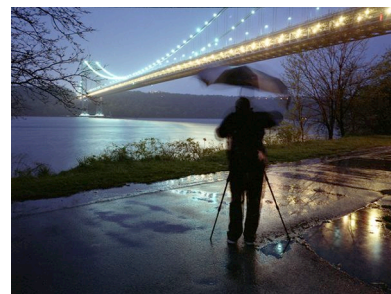
10. Anne Katrine Senstad
The River of Migration, 2010
Exhibition copy, Edition of 6
HD DVD
4.53 min



11. Charles Atherton
Fontana Dam, 2009
Edition of 5
Chromogenic Print
30 x 40 inches



12. Lynn Saville
Ken at the George Washington Bridge
Chromogenic Print
24 x 30 inches framed



LOVE IS A RIVER, Estuary Gallery (Main Gallery cont'd)

13. William Wendt
Transposition, 2003
Exhibition print
Chromogenic Print
50 x 36 inches framed



14. Matthew Lusk
Untitled (Character Study), 2011
Unique
Multi-media installation
(mops, bucket, mannequin, dress)
Dimensions variable



15. Peter Edlund
Crow-Land, 2007
Oil on Canvas
36 x 60 inches



LOVE IS A RIVER, Estuary Gallery (cont'd)

16. Alyssa Taylor Wendt
Instructions Through Sonic Fields, 2011
Multi-media sound installation
(braided hair, media player, headphones)
Dimensions variable



17. Rebecca (Marks) Leopold
Untitled, Tivoli, 2007
4 chromogenic prints
9 x 11 inches each framed



18. Cannon Hersey
Multitude of Possibilities, 2010
Unique
Hand-painted silkscreen
25 x 35 inches framed



Bathroom

1. Marla Leigh Caplan
Untitled, Vanity, 2007
Edition of 10
Chromogenic print mounted to plexiglas
15 x 12 inches



LOVE IS A RIVER, Estuary Gallery (Second Gallery)
proceeding counter-clockwise from entrance

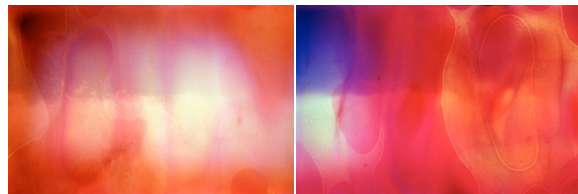
1. Charles Atherton & Marla Leigh Caplan
Life & Limb, 2010
Unique
Archival Pigment Print
36 x 95 inches mounted



2. Jeff Whetstone
Eno River, 2004
Exhibition print
Archival pigment print
29 x 36 inches framed



3. Dillon DeWaters
OceanOcean001/006, 2008
Edition of 10 (diptych)
2 digital chromogenic prints
20 x 30 inches each mounted



4. Robert Ladislas Derr
Across the Dotted Line, 2010
Exhibition copy
Single-channel video (16:9)
Dimensions variable
30 seconds



LOVE IS A RIVER, Estuary Gallery (Second Gallery cont'd)

6. Linda Connor
Workers Relaxing, Zanskar River, Ladakh, India
2007
Edition of 10
Archival pigment print
24 x 30 inches



7. Jack Fulton
Une Riviere du Pays, 1998
Archival pigment print
17 x 22 inches



8. Joshua Lutz
Untitled, Personal Belongings, 2010
Edition of 5
Chromogenic print
11 x 14 inches



9. Victoria Sambunaris
Untitled, 2010
River overflow, Candelaria, TX
Edition of 5
Chromogenic print
20 x 24 inches

